



**P.R. CX VERONE BLANC 25X50**

**67,50 M2 - 1A CALIDAD**

**6,05 EUR/M2**



**A P.R. CX VERONE BLANC 25X50**

**63,00 M2 - 1A CALIDAD**

**6,05 EUR/M2**



**A P.R. CX VERONE BLANC 25X50**

**60,00 M2 - 1A CALIDAD**

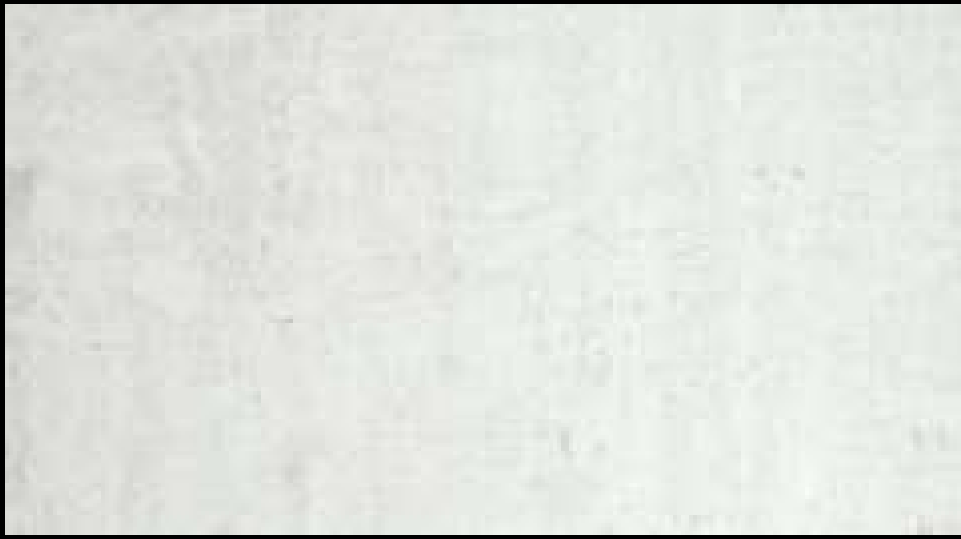
**6,05 EUR/M2**



**A G. BARSAN FLOOR GREY 20,5x61,5**

**38,58 M2 - 1A CALIDAD**

**6,05 EUR/M2**



**A M.C. METALO WHITE 60x120 RECT**

**39,98 M2 - 1A CALIDAD**

**4,72 EUR/M2**



**A M.C. NANOTECH STONEAGE SAND**

**60x60 RECT**

**12,75 M2 - 1A CALIDAD**

**4,72 EUR/M2**



**P.E SLIPSTOP HORTON GREY MATE  
30X60**

**12,60 M2 - 1A ALAPLANA  
4,72 EUR/M2**



**A P.E ZEED ANTHRACITE 60X60 RECT.**

**11,33 M2 - 1A CALIDAD**

**4,72 EUR/M2**



**A P.E ANTID. C3 ROTES SAND MT**

**32,5X32,5**

**5,49 M2 - 1A CALIDAD**

**4,72 EUR/M2**



**A P.E NANOTECH PORTOBELLO GRIS  
MT 100X100 RECT.**

**13,86 M2 - 1A CALIDAD**

**4,72 EUR/M2**



**A P.E BLADE GRAFITO SATINADO**  
**60X120 RECT.**  
**10,71 M2 - 1A CALIDAD**  
**4,72 EUR/M2**



**A P.E MYSORE BEIGE MATE 60X120  
RECT.**

**10,00 M2 - 1A CALIDAD**  
**4,72 EUR/M2**



**P.E SUNDANCE 2.0 GRIS MT 37X75  
RECT.**

**11,95 M2 - 1A CALIDAD**

**4,72 EUR/M2**



**M.C SMARTGRIP LOFTSTONE GREY  
MT 60X60 RECT (20 MM).**

**14,52 M2 - 1A CALIDAD**

**5,32 EUR/M2**



**M.C SMARTGRIP LOFTSTONE  
GRAPHITE MT 60X60 RECT (20 MM).**

**12,04 M2 - 1A CALIDAD**

**4,72 EUR/M2**



**A P.E. BONN GREY MT 30x60**

**29,48 M2 - 1A CALIDAD**

**6,05 EUR/M2**



**M.C NANOTECH STONAGE SAND MT**  
**60X60 RECT**  
**12.39 M2 - 1A KERATILE**  
**4,72 EUR/M2**



**G. TARIFA BEIGE 33.3X33.3**  
**78,22 M2 - COMERCIAL**  
**6,66 EUR/M2**



**G. 133059 MADERA CM 20.5X61.5**  
**115.74 M2 - COMERCIAL**  
**6,66 EUR/M2**



**A P.E. NANOTECH NORDBY GREY**

**15x90**

**57,10 M2 - 1A CALIDAD**

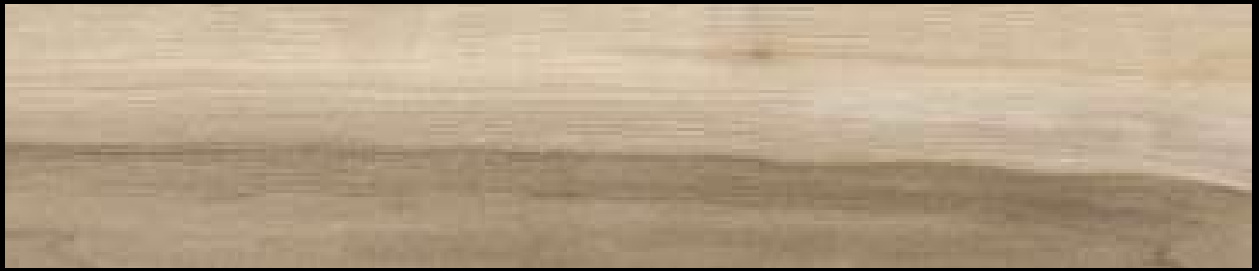
**7,14 EUR/M2**



**A P.E. NANOTECH NORDBY HONEY**  
**15x90**

**38,88 M2 - 1A CALIDAD**

**7,14 EUR/M2**



**A P.E. OUTLAND BEIGE 15x90**

**57,11 M2 - 1A CALIDAD**

**7,14 EUR/M2**



**A P.E. SPRINGWOOD NATURAL M,T**  
**15x90**

**29,126 M2 - 1A CALIDAD**

**7,14 EUR/M2**



**A P.E. LORRAINE DARK GREY 75x75  
RECT**

**23,24 M2 - 1A CALIDAD**

**7,14 EUR/M2**



**A P.E. ALEY WHITE SAT 100x100  
RECT**

**17,82 M2 - 1A CALIDAD**

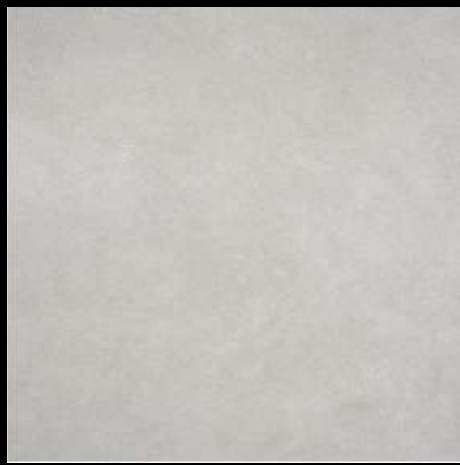
**5,32 EUR/M2**



**A P.E. MATERICA SAND 100x100  
RECT**

**35,64 M2 - 1A CALIDAD**

**6,66 EUR/M2**



**G. VIVES GRIS MATE 45X45**  
**128.8 M2 - COMERCIAL**  
**6,05 EUR/M2**



**S P.E. HILAS GREY 30x60 RECT**  
**40,55 M2 - COMERCIAL**  
**6,05 EUR/M2**



**S P.E. S&G SAM MINK 30x60 RECT**  
**46,69 M2 - COMERCIAL**  
**6,05 EUR/M2**



**S P.E. INOUT VENDELA SILVER MT**  
**30x60 RECT**  
**41,78 M2 - COMERCIAL**  
**6,05 EUR/M2**



**S P.E. FUCANLONG CREAM MT 30x60  
RECT**

**58,98 M2 - COMERCIAL**

**6,05 EUR/M2**



**S P.R. 175177 MARMOL CM 30x60**  
**60,48 M2 - COMERCIAL**  
**6,05 EUR/M2**



**S P.R. ALCORNOQUE SOFT LI  
ALMOND 20x60  
65,52 M2 - COMERCIAL  
4,72 EUR/M2**



**S P.E. TEFNUT PEARL MT 60x60 RECT**  
**50,98 M2 - COMERCIAL**  
**6,66 EUR/M2**



**S P.E. L949010323 CM MAR 60x120**

**RECT**

**57,12 M2 - COMERCIAL**

**8,47 EUR/M2**



**S P.E. SKI MARFIL MT 60x60**

**51,84 M2 - COMERCIAL**

**6,66 EUR/M2**



**S P.E. S-TECH AMARU NATURAL MT**  
**100x100 RECT**  
**47,52 M2 - COMERCIAL**  
**8,47 EUR/M2**



**S P.E. S&G VID MINK 100x100 RECT**  
**47,52 M2 - COMERCIAL**  
**8,47 EUR/M2**



**S P.E. BRIDI GRIGIO MT 60x120 RECT**  
**91,39 M2 - COMERCIAL**  
**10,89 EUR/M2**



**S P.E. MEFITIS BEIGE MT 60x120 RECT**  
**62,83 M2 - COMERCIAL**  
**8,47 EUR/M2**



**S P.E. MEFITIS TERRAZO BEIGE MT**

**60x120 RECT**

**71,40 M2 - COMERCIAL**

**8,47 EUR/M2**



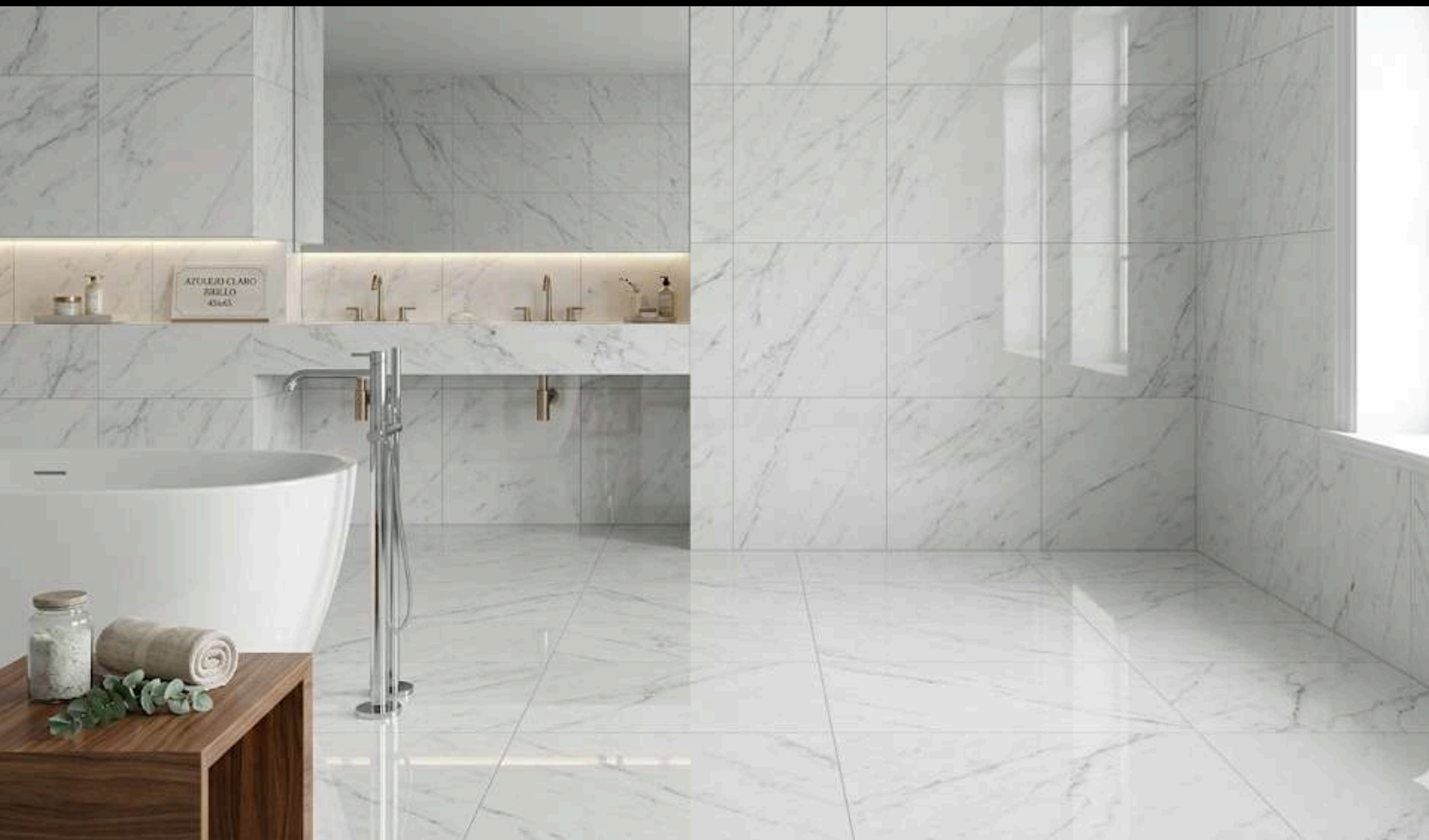
**S P.E. INOUT SVAROGICH GREY MT**  
**75x75 RECT**  
**53,14 M2 - COMERCIAL**  
**7,14 EUR/M2**



**S P.E. INOUT SVAROGICH BEIGE MT**  
**75x75 RECT**  
**53,14 M2 - COMERCIAL**  
**7,14 EUR/M2**



**PELDAÑO ROMO P.E. BLAZE**  
**ROBLE MT (ESTRIAS) 30X90 RECT.**  
**180 PIEZAS - 1A CALIDAD**  
**12,10 EUR**



**G. CALACATTA BRILLO 45X45**  
**90,87 M2 - COMERCIAL**  
**6,66 EUR/M2**



**A P.R. POSEIDON WHITE MT 25x50**  
**130 M2 - COMERCIAL**  
**6,66 EUR/M2**



**S P.E ALTO BRILLO OLYMPIE BEIGE**

**30X60**

**60,48 M2 - 1A CALIDAD**

**7,14 EUR/M2**



**A G. VOLGA CREMA BRILLO 45x45**  
**29,82 M2 - COMERCIAL**  
**6,05 EUR/M2**



**G. EVANDER BEIGE MATE 33,3x33,3**  
**117,33 M2 - COMERCIAL**  
**6,05 EUR/M2**



**G. EVANDER BEIGE MATE 33,3x33,3**  
**34,76 M2 - COMERCIAL**  
**6,05 EUR/M2**

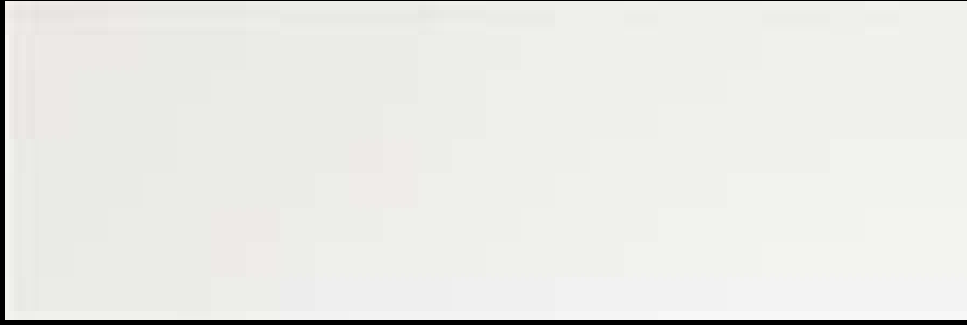


**G. EVANDER TELHA MATE 33,3x33,3**  
**39,11 M2 - COMERCIAL**  
**6,05 EUR/M2**



**G. 163977 PIEDRA OM 33,33x33,33  
ESP.**

**19 M2 - COMERCIAL  
6,05 EUR/M2**



**P.R. BLANCO BRILLO 25x50**  
**192,40 M2 - COMERCIAL**  
**6,66 EUR/M2**



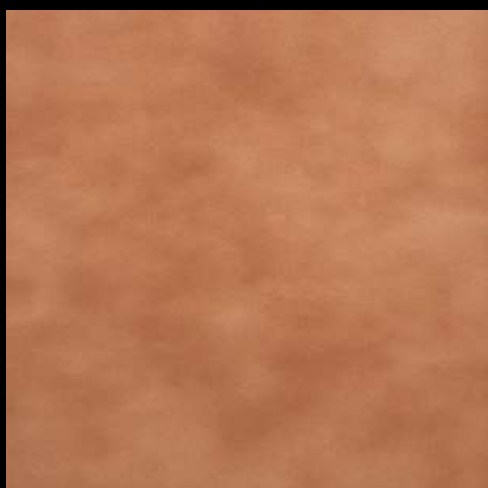
**G. ARTIST GRIS 45x45**  
**18,45 M2 - COMERCIAL**  
**6,05 EUR/M2**



**G. OLIVIA GREY MT 20,5x61,5  
CLARO MATE  
68,08 M2 - COMERCIAL  
6,05 EUR/M2**



**G. TYRONE BEIGE SATINADO 45x45**  
**56,79 M2 - COMERCIAL**  
**6,05 EUR/M2**



**G. ESP. ANTON PAJA MT 33,33x33,33  
ANTID.**

**21 M2 - COMERCIAL  
6,05 EUR/M2**



**P.E. PERICLES WHITE MT 23x120  
RECT.**

**57,50 M2 - COMERCIAL  
8,47 EUR/M2**



**P.E. VALQUIRIA MIEL MT 30x150**  
**RECT. OSCURO MATE**  
**94,18 M2 - COMERCIAL**  
**8,47 EUR/M2**



**P.E. HIPOLITO NOCE MT 60x120  
RECT.**

**68,54 M2 - COMERCIAL**

**8,47 EUR/M2**

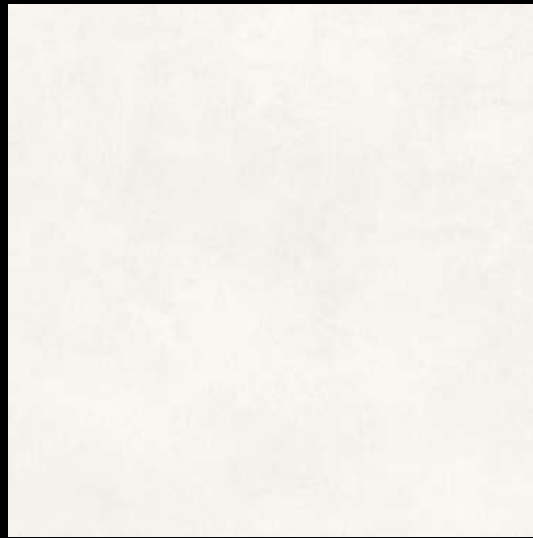


**S P.B. SENSORY DECOR OS BONE**

**33,3X90 RECT**

**35,96 M2 - 1A CALIDAD**

**4,72 EUR/M2**



**S P.E. INDO BLANCO MT 45X45**  
**155,35 M2 - 1A CALIDAD**  
**8,47 EUR/M2**



**P.E. MACKE HAYA MT 23x120 RECT.  
3DB CLARO MATE  
56,42 M2 - COMERCIAL  
8,47 EUR/M2**



**A P.R. RILEY WARM MATE 30x60**  
**77,76 M2 - COMERCIAL**  
**6,05 EUR/M2**

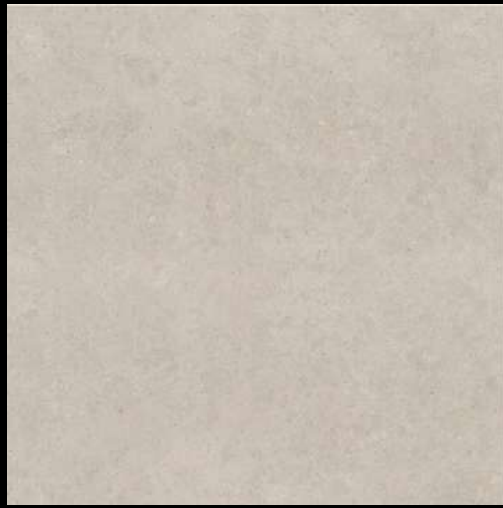


**A P.E. PASIFLORA BLONDE 15x90**  
**54,68 M2 - COMERCIAL**  
**7,14 EUR/M2**



**A P.E. CAPUCHINA GREY MT 23X120  
RECT**

**54,25 M2 - COMERCIAL  
8,47 EUR/M2**



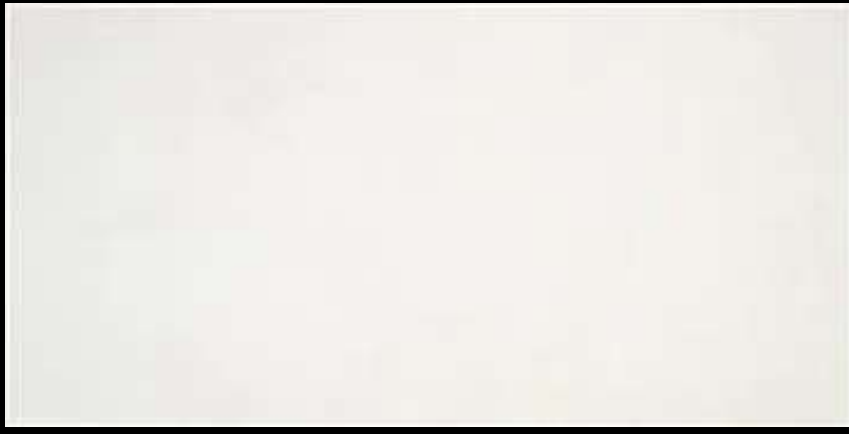
**S P.E. ULISSE BEIGE MT 120x120  
RECT.**

**51,84 M2 - 1A CALIDAD**

**8,47 EUR/M2**



**S P.R. PARKIA MOCCA MATE 20x60**  
**COM**  
**40,56 M2 - COMERCIAL**  
**4,72 EUR/M2**



**S P.R. LIEBERMANN ICE MATE 30x60**

**COM**

**79,20 M2 - COMERCIAL**

**4,72 EUR/M2**



**S P.E. ORSA NATURAL MT 15x90**  
**COM**  
**20,66 M2 - COMERCIAL**  
**6,66 EUR/M2**



**S P.E. CAPUCHINA BEIGE MT 23x120**  
**RECT. COM**  
**36,89 M2 - COMERCIAL**  
**8,47 EUR/M2**



**S G. ESP. ANTID ROCAY GREY**

**33,33X33,33**

**57,00 M2 - COMERCIAL**

**6,05 EUR/M2**



**A P.E. LORRAINE DARK GREY MT**

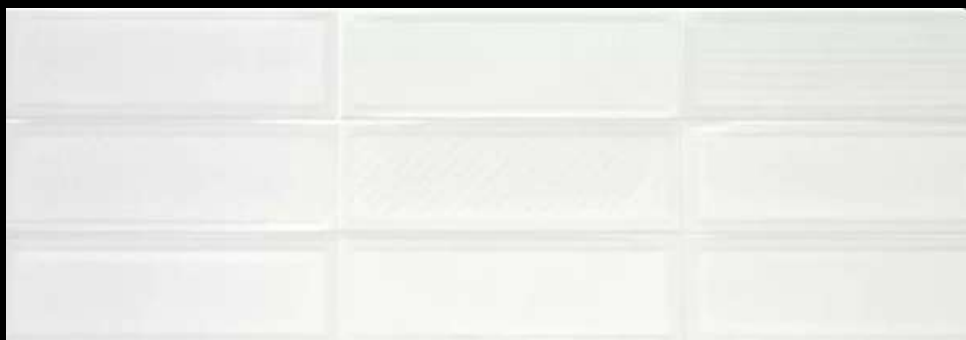
**75x75 RECT**

**13,28 M2 - 1A CALIDAD**

**6,05 EUR/M2**



**S ASPEN BLANCO MATE 20x60 COM**  
**20,28 M2 - COMERCIAL**  
**8,47 EUR/M2**



**A P.R. JAZZ RT BLANCO BRILLO 25x75**

**39,37 M2 - COMERCIAL**

**6,05 EUR/M2**



**P.R. REV FRANKIE WHITE SAT 25x50**  
**104 M2 - COMERCIAL**  
**6,05 EUR/M2**



**P.B. DUNE ICE MATE 33,3x90 RECT.  
29,97 M2 - COMERCIAL  
5,08 EUR/M2**



**P.R. ACONITE GREY MOSAIC MATE**

**30x60**

**77,76 M2 - COMERCIAL**

**4,72 EUR/M2**



**P.R. BELA BLANCO MT 25x50**  
**CLARO MATE**  
**120,00 M2 - COMERCIAL**  
**6,66 EUR/M2**



**G. FERIK GRIS MT 20,5x61,5**

**32,90 M2 - COMERCIAL**

**6,05 EUR/M2**



**G. TYRONE PERLA SATINADO 45x45**  
**31,23 M2 - COMERCIAL**  
**6,05 EUR/M2**



**REV ODIN GREIGE BRILLO 30x60**  
**27,54 M2 - COMERCIAL**  
**4,72 EUR/M2**



**P.E. S-TECH PRESLEY TOASTED MT**  
**23x120 RECT.**  
**21,70 M2 - COMERCIAL**  
**7,14 EUR/M2**



**S P.E. L712610153 OM RUS 32,5x32,5**  
**126,33 M2 - COMERCIAL**  
**6,66 EUR/M2**



**P.B. DUNE ICE BRILLO 25x75**  
**13,37 M2 - COMERCIAL**  
**4,72 EUR/M2**

**BAJADA DE PRECIO**



**A P.E. ROCKLAND ANTHRACITE**

**100X100 RECT**

**17,82 M2 - 1A CALIDAD**

**4,72 EUR/M2**

**BAJADA DE PRECIO**



**S P.E. ANTID NEWBURY GREY MT**  
**100x100 RECT**  
**23,76 M2 - 1A CALIDAD**  
**4,72 EUR/M2**



**S P.E. NANOTECH NORDBY  
NATURAL 15X90**

**24,30 M2 - 1A CALIDAD**

**6,05 EUR/M2**



**S P.E. NANOTECH NORDBY WHITE**  
**15X90**

**61,97 M2 - 1A CALIDAD**

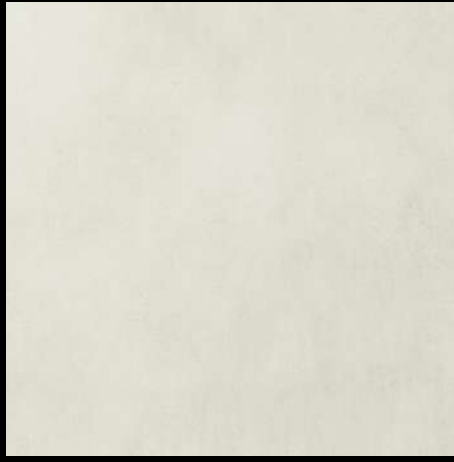
**6,05 EUR/M2**



**P.E. NINSBA BROWN MT 30x150  
RECT.**

**39,02 M2 - 1A CALIDAD**

**8,47 EUR/M2**



**S G. LYON IVORY MT 45x45**  
**68,16 M2 - COMERCIAL**  
**6,05 EUR/M2**



**S P.E. LAWAN LIGHT 23x120 RECT.**  
**57,51 M2 - COMERCIAL**  
**8,47 EUR/M2**



**S P.E. CARRIERE BLUE 100x100 RECT**

**15,84 M2 - 1A CALIDAD**

**4,72 EUR/M2**



**S P.E. NANOTECH NORDBY  
NATURAL 15X90**

**35,24 M2 - 1A CALIDAD**

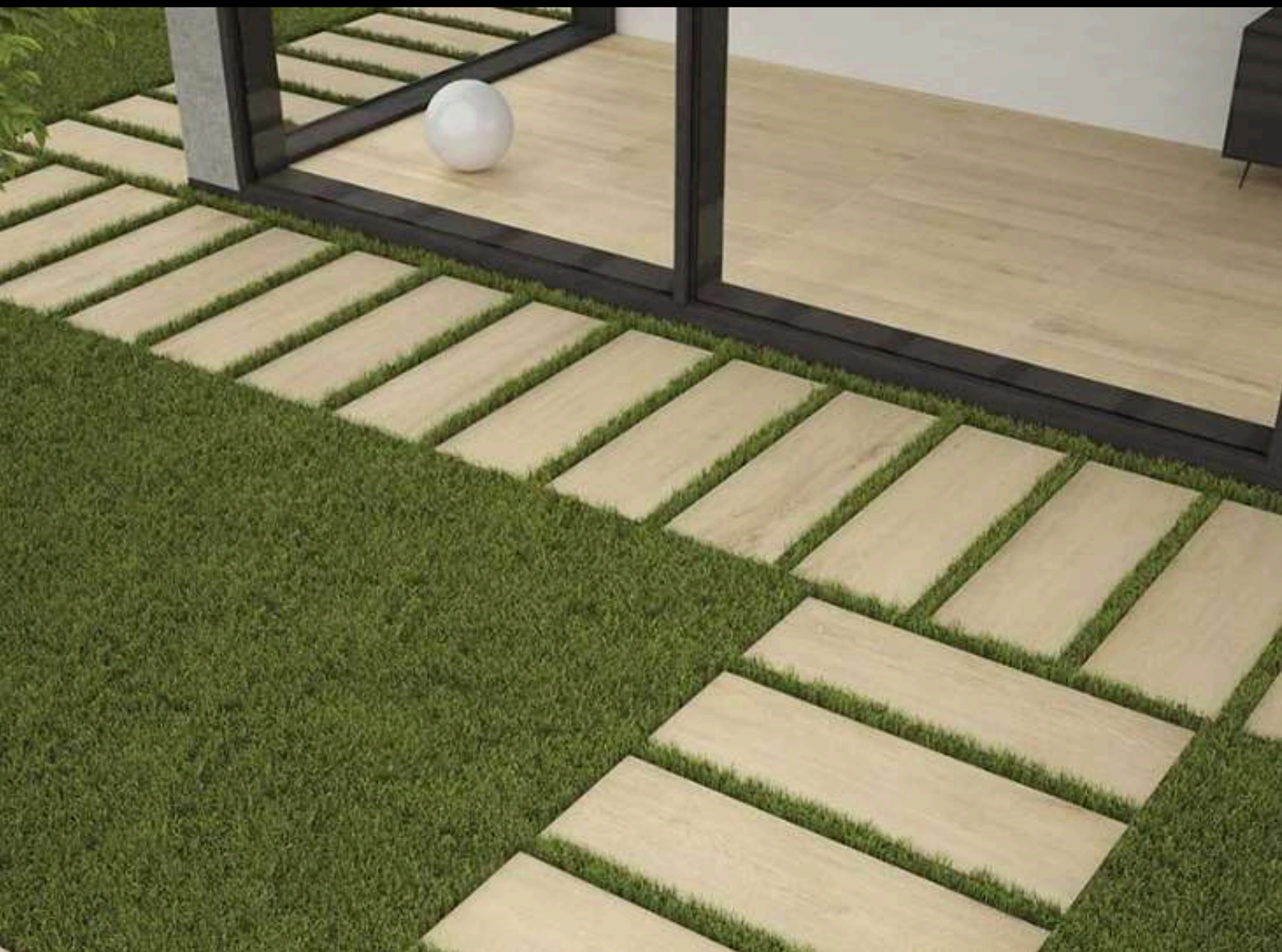
**6,05 EUR/M2**



**S P.E. REVERIE ARDOR 15x90**

**19,44 M2 - 1A CALIDAD**

**4,72 EUR/M2**



**S P.E. INOUT TACORA BEIGE MT**

**30X150 RECT**

**20,18 M2 - 1A CALIDAD**

**6,05 EUR/M2**



**S P.E. S-TECH UPPSALA NATURAL MT**

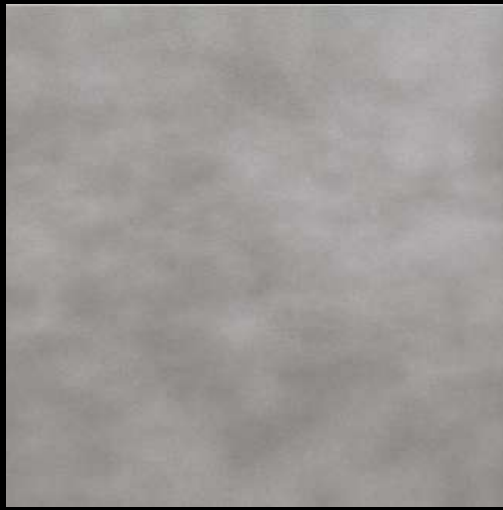
**30x150 RECT**

**43,06 M2 - 1A CALIDAD**

**8,47 EUR/M2**



**G. L949010180 OM CEM 45x45**  
**130,64 M2 - COMERCIAL**  
**6,05 EUR/M2**



**G. ESP. ANTON GRIS MT 33,33x33,33**  
**CLARO MATE**  
**54 M2 - COMERCIAL**  
**6,05 EUR/M2**



**S G. DABO RHODES GRIS 45x45**  
**34,08 M2 - COMERCIAL**  
**6,05 EUR/M2**



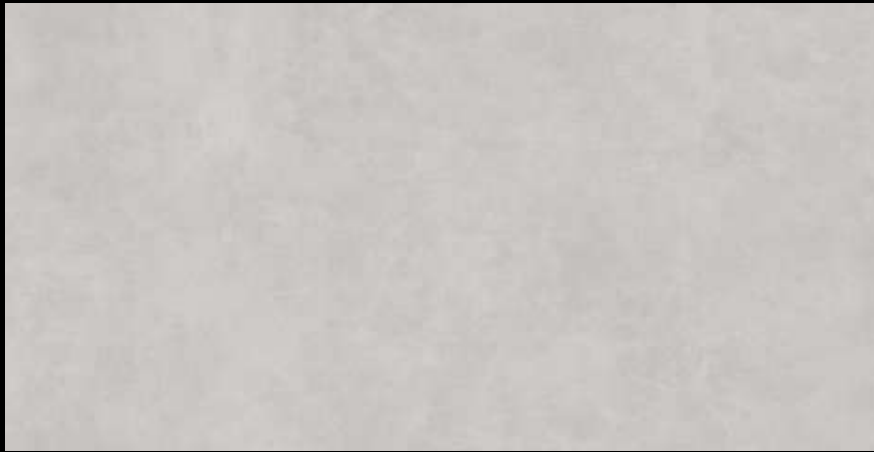
**S G. VELETA GRIS MT 45X45**  
**15,62 M2 - COMERCIAL**  
**6,05 EUR/M2**



**S P.E. ANTID ARHUS TABACO 23X120**  
**45,85 M2 - COMERCIAL**  
**8,47 EUR/M2**



**S G. ERNESTO ROBLE 20,5x61,5**  
**179,28 M2 - COMERCIAL**  
**8,47 EUR/M2**



**S M.C. TOLOUSE GRIS MT 60x120  
RECT**

**12,85 M2 - 1A CALIDAD**

**6,05 EUR/M2**



**S M.C. MADRID LIGHT GREY MT**

**120x120 RECT**

**14,40 M2 - 1A CALIDAD**

**4,72 EUR/M2**



**S G. EBANO MIEL 20,5x61,5 COM**  
**54,46 M2 - COMERCIAL**  
**6,66 EUR/M2**



**S G. MALMO GRIS 20,5x61,5 COM  
72,62 M2 - COMERCIAL  
6,66 EUR/M2**



**S G. ESP. COTTO 33,33x33,33 COM  
54 M2 - COMERCIAL  
6,05 EUR/M2**



**S IBERIA BEIGE 25x50 COM**  
**72 M2 - COMERCIAL**  
**5,08 EUR/M2**



**S P.E. M796210050 CM MAD 25x100**

**RECT. COM**

**55,97 M2 - COMERCIAL**

**8,47 EUR/M2**

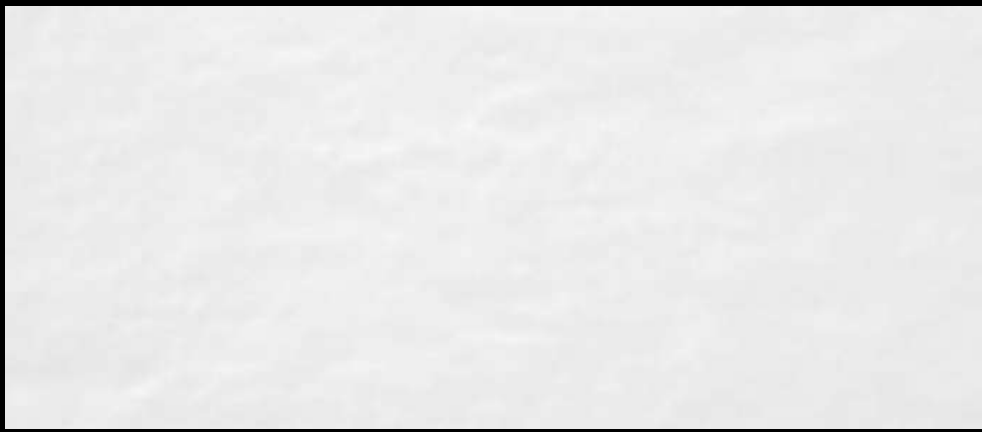


**S G. JOHNSTONE BEIGE BRILLO**

**45X45**

**115,02 M2 - 1A CALIDAD**

**8,47 EUR/M2**



**A P.R. LIMBO BLANC SATIN 20x60**  
**74,88 M2 - COMERCIAL**  
**4,72 EUR/M2**



**A P.R. B636410237 CM CEM 30X60**  
**42,84 M2 - COMERCIAL**  
**4,72 EUR/M2**



**P.R. L949010143 NI BLA 30x60**  
**54,18 M2 - COMERCIAL**  
**4,72 EUR/M2**



**A P.R. LARDENNE GRIS SAT 25x50**

**59,75 M2 - 1A CALIDAD**

**6,66 EUR/M2**



**A P.R. LARDENNE GRIS SAT 25x50**

**66,63 M2 - 1A CALIDAD**

**6,66 EUR/M2**



**A P.R. WALK BONE MT 25x50**

**9,75 M2 - 1A CALIDAD**

**4,72 EUR/M2**



**A P.R, SYLVIA MARFIL BRILLO 25x75**  
**53,82 M2 - 1A CALIDAD**  
**6,05 EUR/M2**



**A G. ARIANA CREMA BRILLO 45X45**  
**15,62 M2 - 1A CALIDAD**  
**5,08 EUR/M2**



**A P.E. SLIPSTOP HORTON GREY**

**MATE 30x60**

**30,24 M2 - 1A CALIDAD**

**6,05 EUR/M2**



**P.E. 362063 MADRA CM 23x120**  
**CLARO MATE**  
**27,96 M2 - COMERCIAL**  
**7,14 EUR/M2**



**P.E. TULLIA MULTI GREY MT 60x60**

**CLARO MATE**

**51,84 M2 - COMERCIAL**

**7,14 EUR/M2**



**A P.B. NARCISO WHITE BRILLO**

**33,3X90 RECT**

**197,80 M2 - COMERCIAL**

**9,32 EUR/M2**



**G. AIZKORRI ABEDUL MT 20,5x61,5**  
**CLARO MATE**  
**65,81 M2 - COMERCIAL**  
**6,66 EUR/M2**

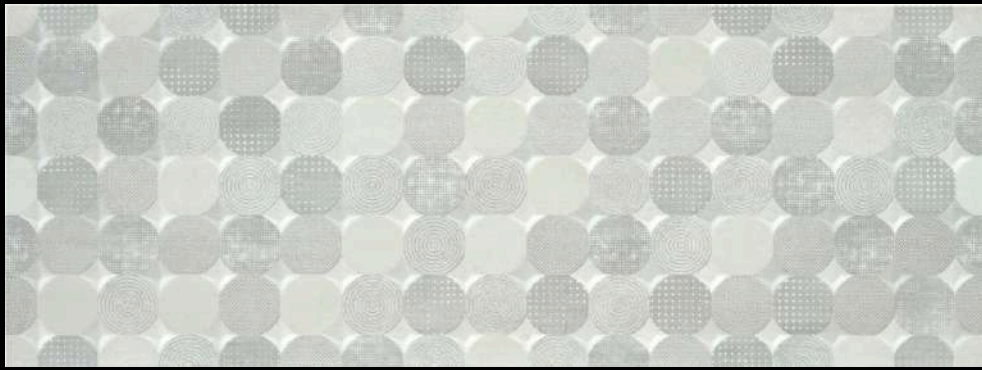


**A P.E. PULIDO ADELBERT IVORY**

**60X120 RECT**

**32,30 M2 - COMERCIAL**

**10,89 EUR/M2**



**P.B. PENZA DECOR CI COLD 33,3x90  
RECT**

**143,85 M2 - 1A CALIDAD  
4,72 EUR/M2**



**M.C. SMARTGRIP LOFTSTONE CREAM**

**MT 60x60 RECT**

**31,86 M2 - 1A CALIDAD**

**6,66 EUR/M2**



**REV ROBBY OAK MT 25x50**  
**104 M2 - COMERCIAL**  
**6,05 EUR/M2**



**P.E. ALEX BIANCO MT 23x120 RECT.**

**3DB**

**34,72 M2 - COMERCIAL**

**7,14 EUR/M2**



**P.E. ARTICWOOD ICE GRAY MT**

**23x120**

**RECT.**

**58,59 M2 - COMERCIAL**

**8,47 EUR/M2**



**P.E. INARI HAYA MT 23x120 RECT.**

**3DB**

**58,59 M2 - COMERCIAL**

**8,47 EUR/M2**



**A P.E. PULIDO BLADE PERLA 100x100  
RECT**

**5,76 M2 - 1A CALIDAD**

**4,72 EUR/M2**



**A P.E. PULIDO NORTON LIGHT  
GREY 120X120 RECT  
8,50 M2 - 1A CALIDAD  
4,72 EUR/M2**



**A P.E. REVERIE SERENITY 15X90**

**29,16 M2 - 1A CALIDAD**

**6,05 EUR/M2**



**A P.E. SLIPSTOP SORRENTO**  
**ANTRACITA MATE 37X75 RECT**  
**14,16 M2 - 1A CALIDAD**  
**4,72 EUR/M2**



**A G. WALK PERLA 45x45**

**53,96 M2 - 1A CALIDAD**

**6,05 EUR/M2**



**A P.E. NEWBURY GREY SAT 30x60**

**72,00 M2 - 1A CALIDAD**

**6,05 EUR/M2**



**A P.E. PETUNIA BLANCO SATINADO**  
**60x60 RECT.**  
**63,72 M2 - COMERCIAL**  
**8,47 EUR/M2**



**A G. A234810027 CM HID 45x45**  
**62,48 M2 - COMERCIAL**  
**6,05 EUR/M2**



**A G. BOGATIR MOCCA MT 23x120  
RECT**

**14,10 M2 - COMERCIAL  
6,66 EUR/M2**



**A G. DINGLE GRIS 20,5X61,5**  
**29,50 M2 - COMERCIAL**  
**6,05 EUR/M2**



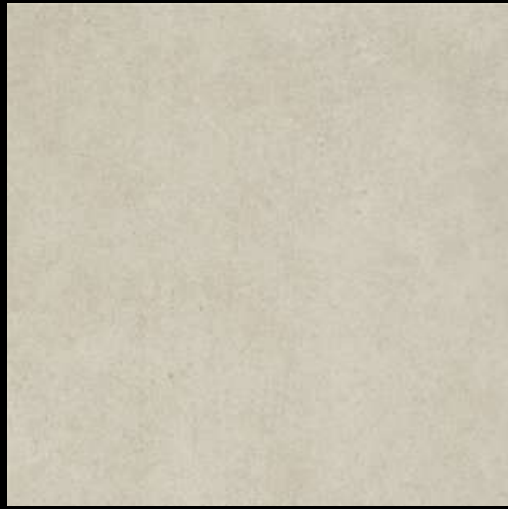
**A P.E. NANOTECH OLIVIA NATURAL**  
**MT 23x120 RECT**  
**39,06 M2 - COMERCIAL**  
**7,14 EUR/M2**



**A G. L7126101453 CM CEM 45X45**  
**62,48 M2 - COMERCIAL**  
**6,05 EUR/M2**



**A P.B. CELENO DECOR PZ BLANCO**  
**MT 33,3x90 RECT.**  
**35,96 M2 - 1A CALIDAD**  
**4,72 EUR/M2**



**A G. TENNIC BEIGE MATE 45x45**  
**CLARO MATE**  
**159,03 M2 - COMERCIAL**  
**6,05 EUR/M2**



**A G. COLISEUM BLANCO MT 45x45**

**CLARO MATE**

**127,79 M2 - COMERCIAL**

**6,05 EUR/M2**



**A P.R. PARKIA MOCCA MATE 20x60**  
**145,08 M2 - COMERCIAL**  
**4,72 EUR/M2**



**P.R. BLANCO MATE 30x60**  
**115,92 M2 - COMERCIAL**  
**4,72 EUR/M2**

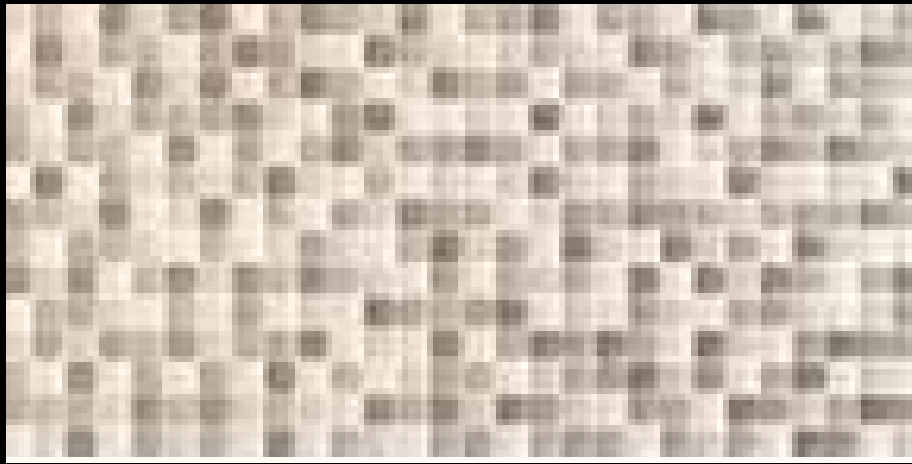


**A G. ESP L712610020M RUS**

**33,33x33,33**

**54,00 M2 - COMERCIAL**

**6,05 EUR/M2**



**A P.R. CUBE MIX CREMA 25x50**

**66,00 M2 - 1A CALIDAD**

**6,05 EUR/M2**



**A P.R. ALURE MOSAIC GREY SAT**

**33,3x100**

**44,62 M2 - 1A CALIDAD**

**6,05 EUR/M2**



**A G. L712610143 CM CEM 45x45**  
**62,48 M2 - COMERCIAL**  
**6,05 EUR/M2**



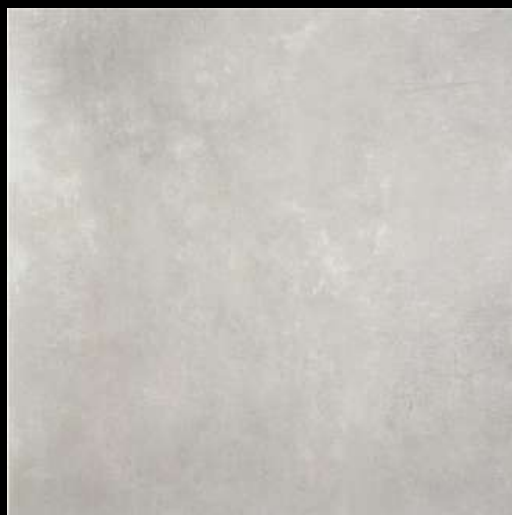
**G. ACACIA MIEL 20,5x61,5 CLARO  
MATE**

**28,36 M2 - COMERCIAL**

**6,05 EUR/M2**



**REV VINUESA MOSAIC PERLA MATE**  
**30x60 CLARO MATE**  
**77,76 M2 - COMERCIAL**  
**4,72 EUR/M2**



**P.E. DANIEL CEMENTO MT 45x45**  
**CLARO MATE**  
**36,92 M2 - COMERCIAL**  
**6,05 EUR/M2**



**P.E. SVAROGICH WHITE MT 75x75  
RECT. INOUT CLARO MATE  
53,13 M2 - COMERCIAL  
6,90 EUR/M2**



**P.E. SVAROGICH GREY MT 75x75**  
**RECT. INOUT OSCURO MATE**  
**53,13 M2 - COMERCIAL**  
**6,90 EUR/M2**

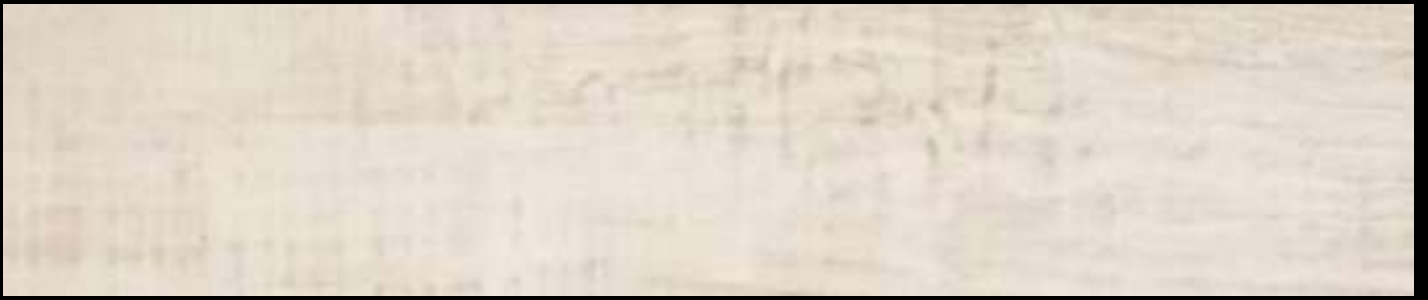


**PASTA BLANCA TRACE CASPIO  
BLANCO MT 33,3x90 RECT. CLARO  
MATE**

**89,91 M2 - COMERCIAL  
5,08 EUR/M2**



**P.B. TREND SUTI SAND MT 33,3x90**  
**RECT. CLARO MATE**  
**59,94 M2 - COMERCIAL**  
**5,08 EUR/M2**



**A CX MIKADO 15x90 BLANC 1A**  
**AZULMED BLANCA**  
**27,94 M2 - 1A CALIDAD**  
**6,05 EUR/M2**

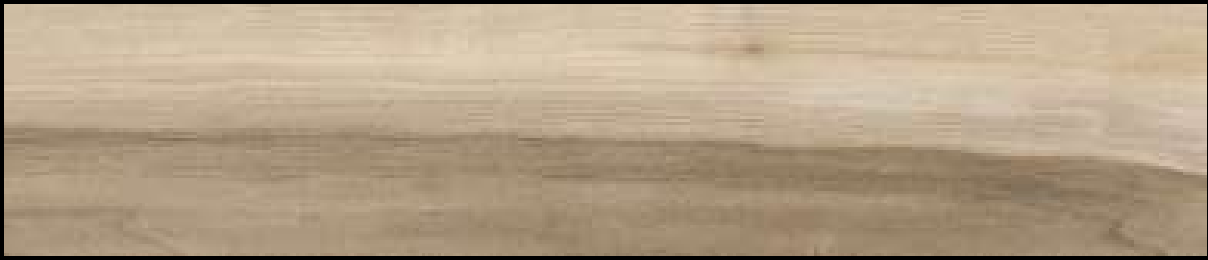


**A P.E. NANOTECH NORDBY HONEY**

**MT 15x90**

**19,44 M2 - 1A CALIDAD**

**6,05 EUR/M2**



**A P.E. OUTLAND BEIGE MATE 15x90**  
**41,31 M2 - 1A CALIDAD**  
**6,66 EUR/M2**



**A P.E. ANTID. C3 MONTI PAJA MT**

**32,5x32,5**

**38,44 M2 - 1A CALIDAD**

**6,66 EUR/M2**



**A P.E. ANTID. C3 TACOS VERA  
MULTICOLOR MT 32,5x32,5  
17,85 M2 - 1A CALIDAD  
6,66 EUR/M2**

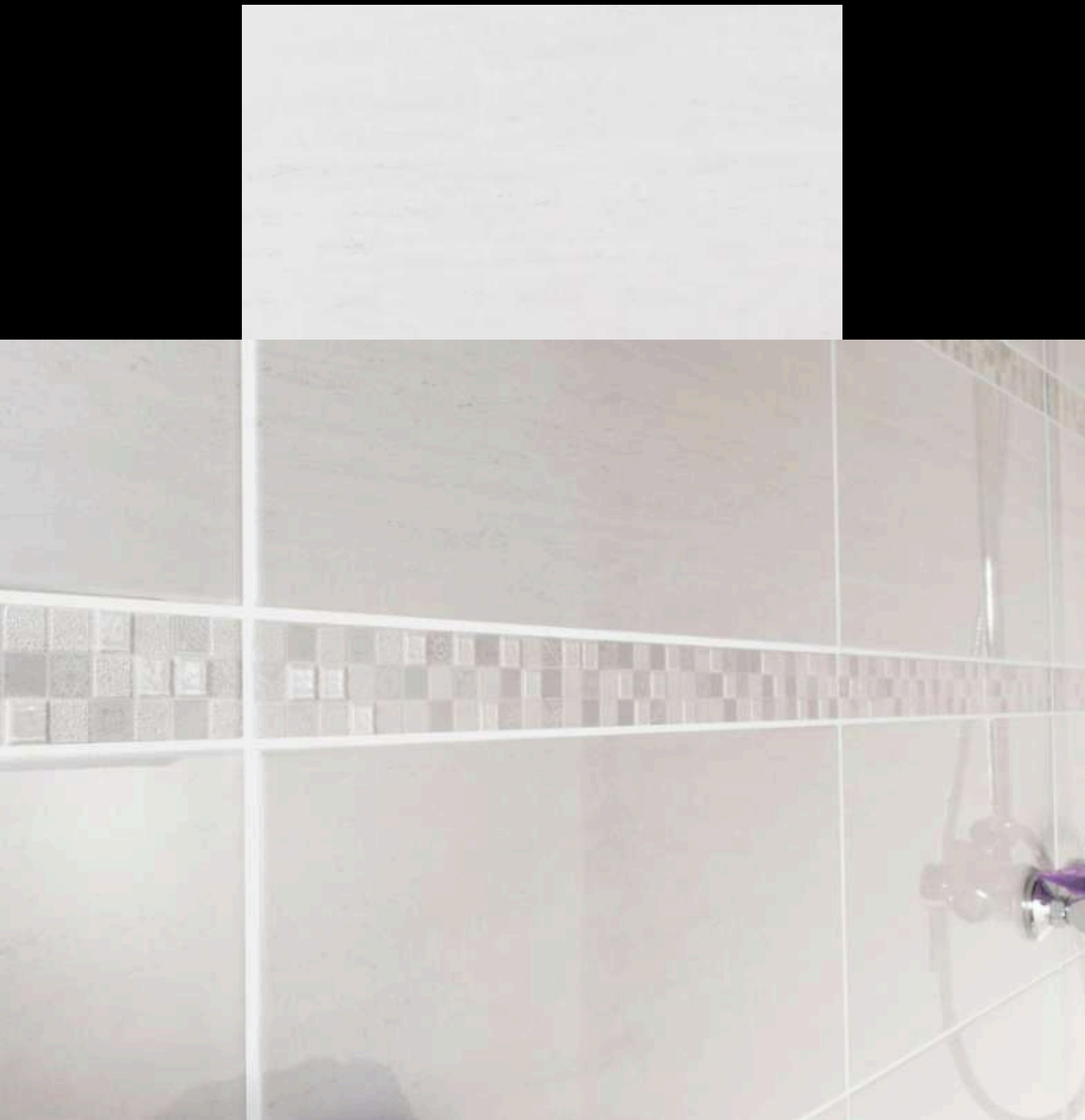


**A P.E. TECHSTONE ANTHRACITE**

**45x45**

**7,09 M2 - 1A CALIDAD**

**6,05 EUR/M2**



**A P.R. CX VERONE BLANC 25X50**

**36,00 M2 - 1A CALIDAD**

**6,05 EUR/M2**



**A P.R. CX VERONE BLANC 25X50**  
**45,00 M2 - 1A CALIDAD**  
**6,05 EUR/M2**



**A P.R. GALENA GREY 20x60**

**56,16 M2 - 1A CALIDAD**

**5,08 EUR/M2**



**A P.R. DUNE TALO GREY MT 25x75**

**55,75 M2 - 1A CALIDAD**

**5,08 EUR/M2**



**A P.R. ALURE MOSAIC GREY SAT**

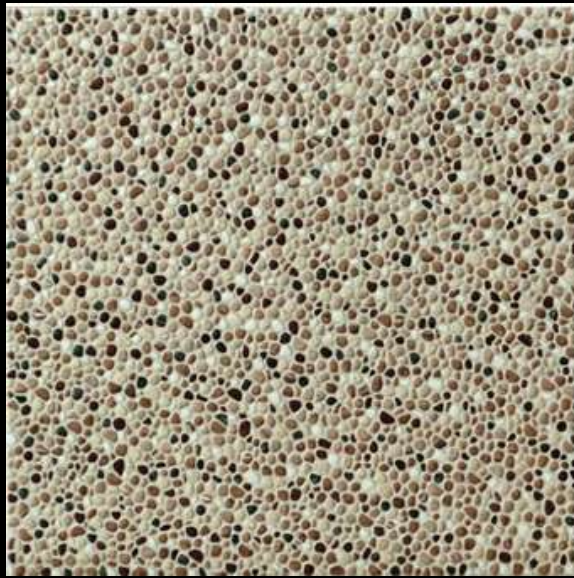
**33,3X100**

**62,60 M2 - 1A CALIDAD**

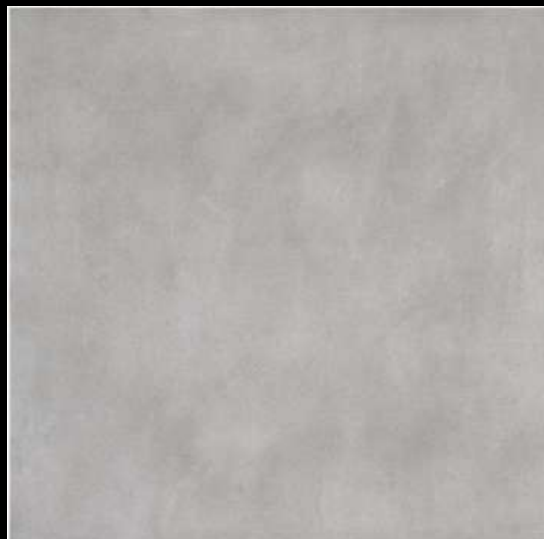
**5,08 EUR/M2**



**A G. LOURDO DUNE 20,5x61,5**  
**108,92 M2 - COMERCIAL**  
**6,66 EUR/M2**



**A G. BETA BEIGE 45x45**  
**45,44 M2 - COMECIAL**  
**6,05 EUR/M2**



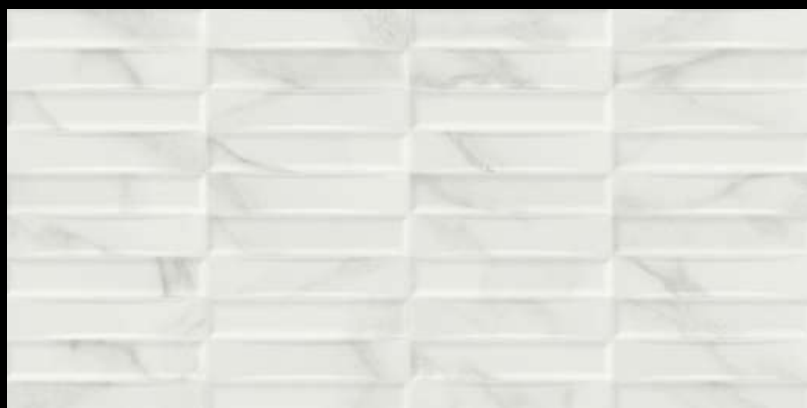
**A G. ESP. CLOACINA GRIS MT**  
**33,33x33,33 ANTID**  
**106 M2 - COMERCIAL**  
**6,05 EUR/M2**



**A P.R. BLANCO BRILLO 25x50**  
**104 M2 - COMERCIAL**  
**4,72 EUR/M2**



**A P.R. BLANCO BRILLO 25x50**  
**34,5 M2 - COMERCIAL**  
**4,72 EUR/M2**



**A P.R. A234810026 CM MAR 30X60**  
**129,6 M2 - COMERCIAL**  
**4,72 EUR/M2**



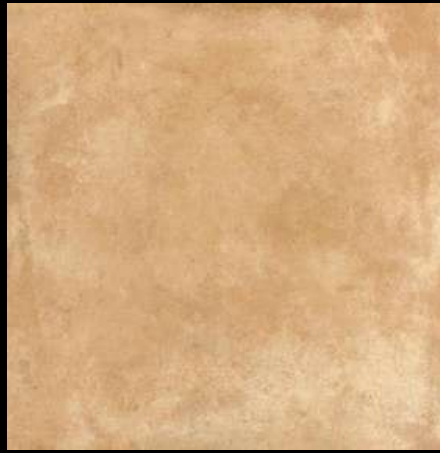
**P.E. LIMWOOD GRAU 23x120**  
**60,39 M2 - COMERCIAL**  
**8,47 EUR/M2**



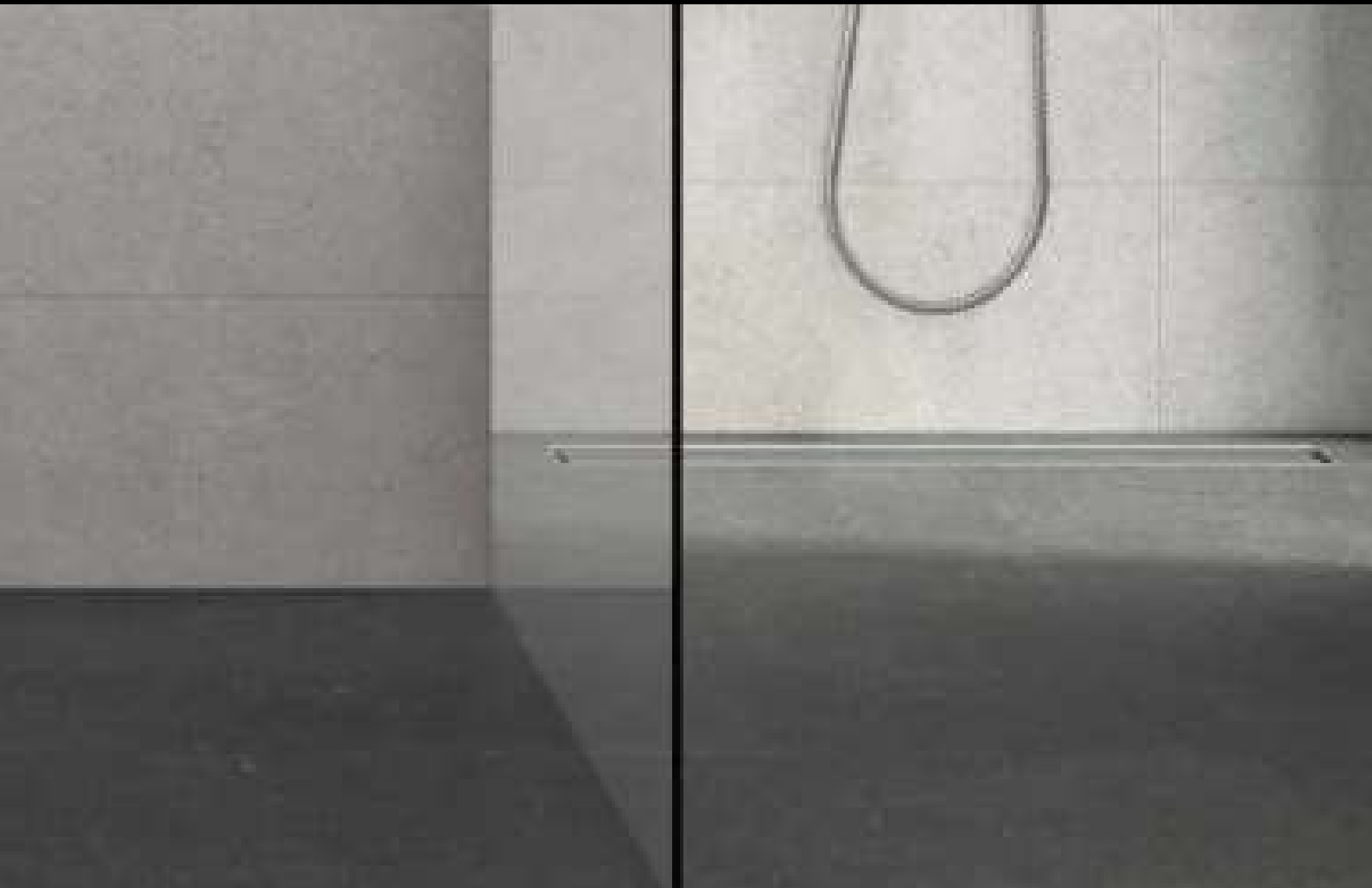
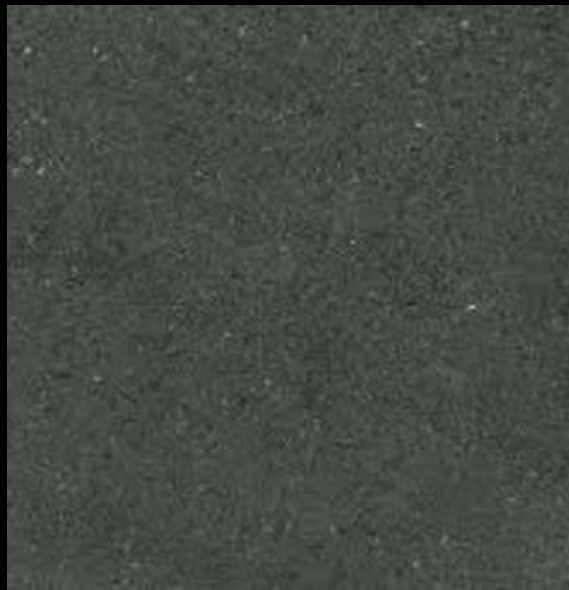
**P.E. THEODORE ALMOND 23x120  
RECT**

**39,06 M2 - COMERCIAL**

**8,47 EUR/M2**



**S G. TARIFA BEIGE 33,3x33,3**  
**90,88 M2 - COMERCIAL**  
**6,66 EUR/M2**



**S P.E. TECHSTONE ANTHRACITE**

**75x75 RECT**

**15,49 M2 - 1A CALIDAD**

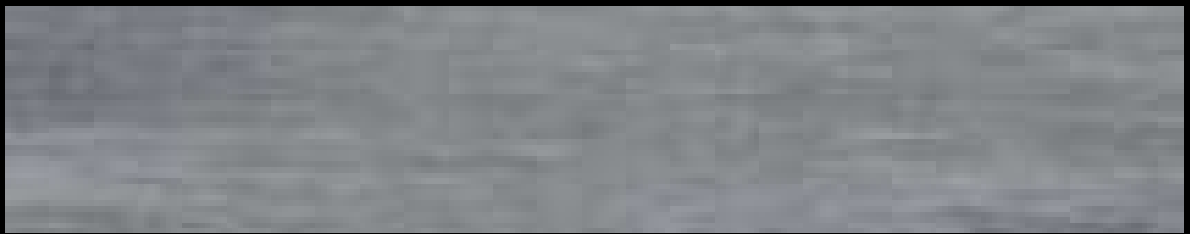
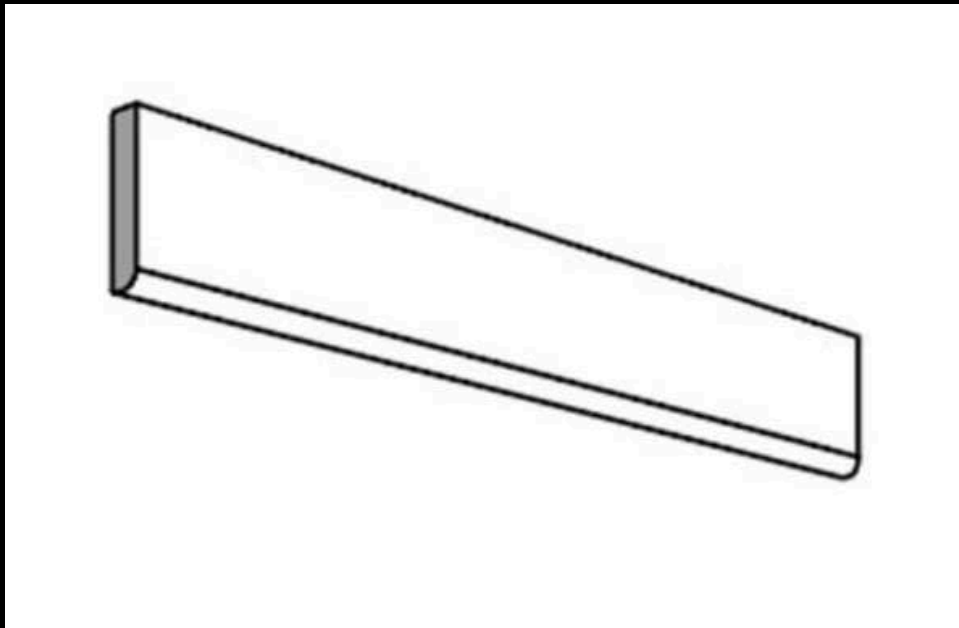
**4,72 EUR/M2**



**A P.R. ERAWAN SOFT ALMOND  
LIGHT MT 20x60**

**18,72 M2 - 1A CALIDAD**

**4,72 EUR/M2**

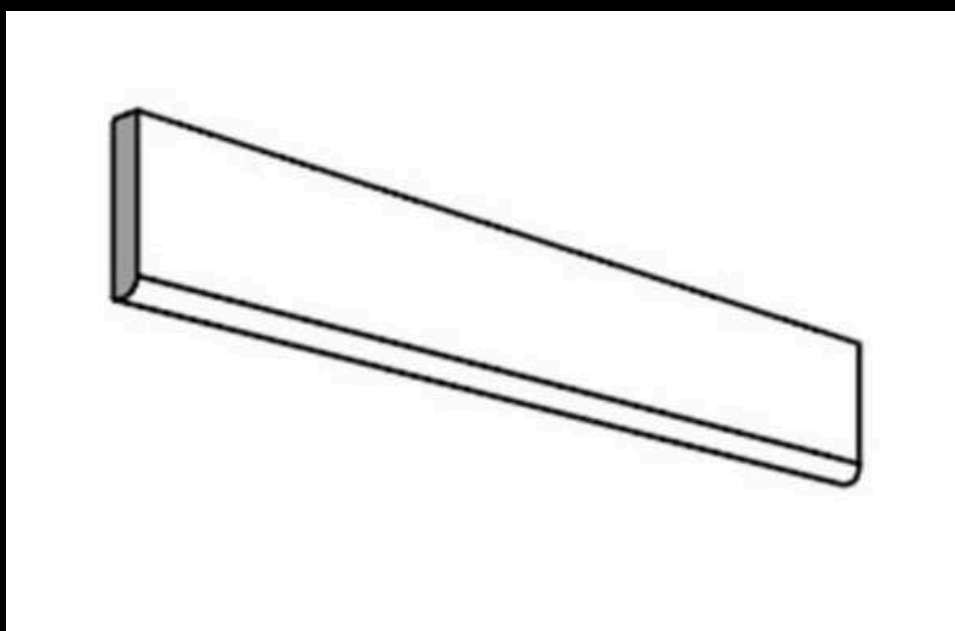


**RODAPIE ROMO P.E. DECKARD GRIS**

**MATE 7X90 NR**

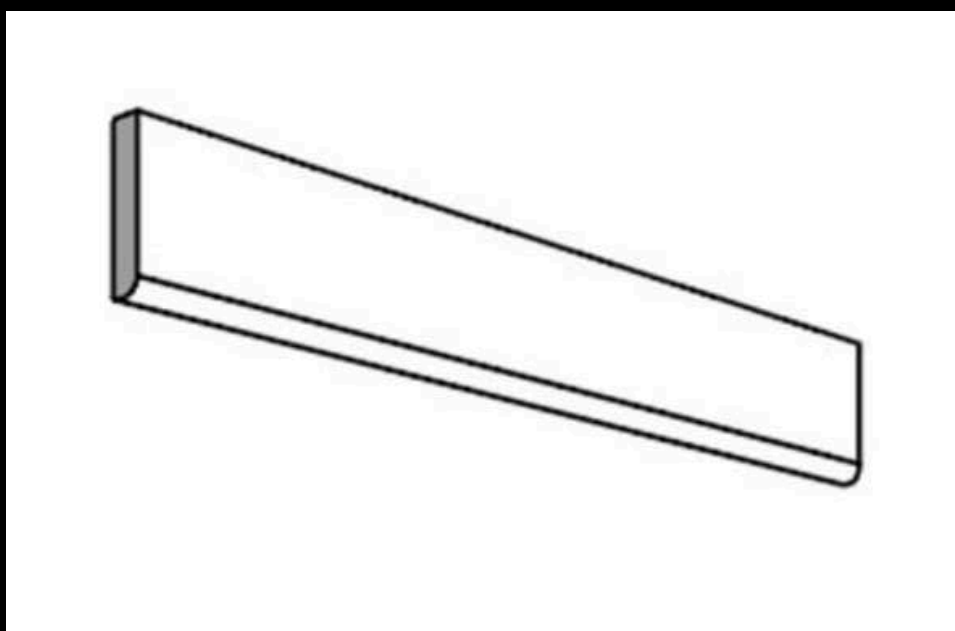
**102 PIEZAS - 1A CALIDAD**

**2,42 EUR**



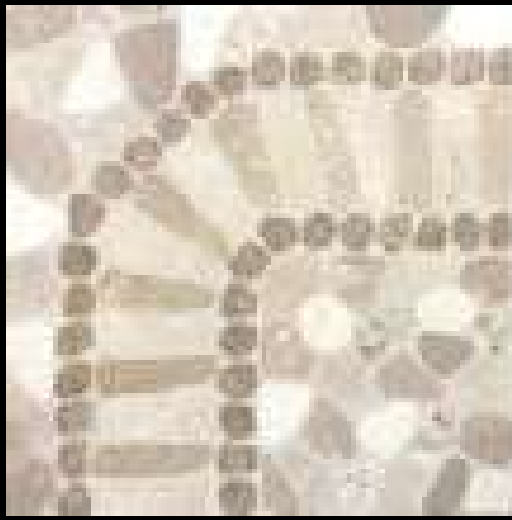
**RODAPIE ROMO P.E. LYSTA OAK MT  
7X90 NR**

**90 PIEZAS - 1A CALIDAD**  
**2,42 EUR**



**RODAPIE ROMO P.E. ORSA GRIS MT  
7X90 NR**

**147 PIEZAS - 1A CALIDAD  
2,42 EUR**



**G. PAROS BEIGE 45x45**  
**90,72 M2 - COMERCIAL**  
**8,47 EUR/M2**



**P.E. MEDEA BEIGE MT 60X60**

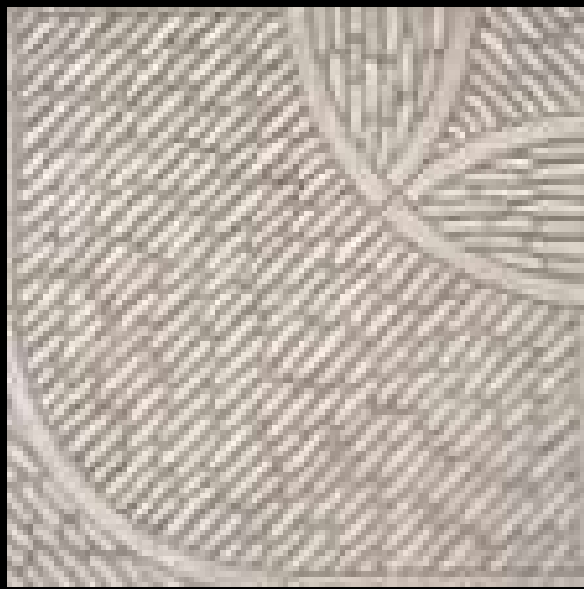
**NANOTECH**

**51,84 M2 - COMERCIAL**

**11,50 EUR/M2**



**P.E. PANDORA COPPER MT 60X60**  
**NANOTECH**  
**51,84 M2 - COMERCIAL**  
**11,50 EUR/M2**



**G. EGINA GREY 45X45**  
**90,72 M2 - COMERCIAL**  
**8,47 EUR/M2**



**PELDAÑO ROMO P.E. ROTES SAND**

**ANTID. C3 32,5X32,5**

**1222 PIEZAS - 1A CALIDAD**

**4,84 EUR**